

HOUSING

PI 05

1/4"-Sch 10-AV-5

002-XV-06

PI 04

H2 DETECTOR
AIT 006

NG DETECTOR
AIT 006

CC 06
002-CC-06

Motor

004-PSV-04

%CO

PC 02

%TO

1/4"-Sch 10-H/GN BLEND-4

002-CV-02

PIT 02

TK-H2GN_002

1/4"-Sch 10-H/GN-BLEND-6

005-CV-05

PC 003
001-PC-003

%TO

%TO

TK-H2GN_001

PIT 03

1/4"

HA-108

%CO

PC 01

%TO

FI 01

PIT 01

1/4"-Sch 10-H2/NG - BLEND-1

001-CV-01

N2
60
psi

TK-003

1/4"-Sch 10-N-012

1/4"

HA-109

U-6" SCH 80

TIT 07

1/4"

HA-105

%CO

EC 07

%TO

TC 07

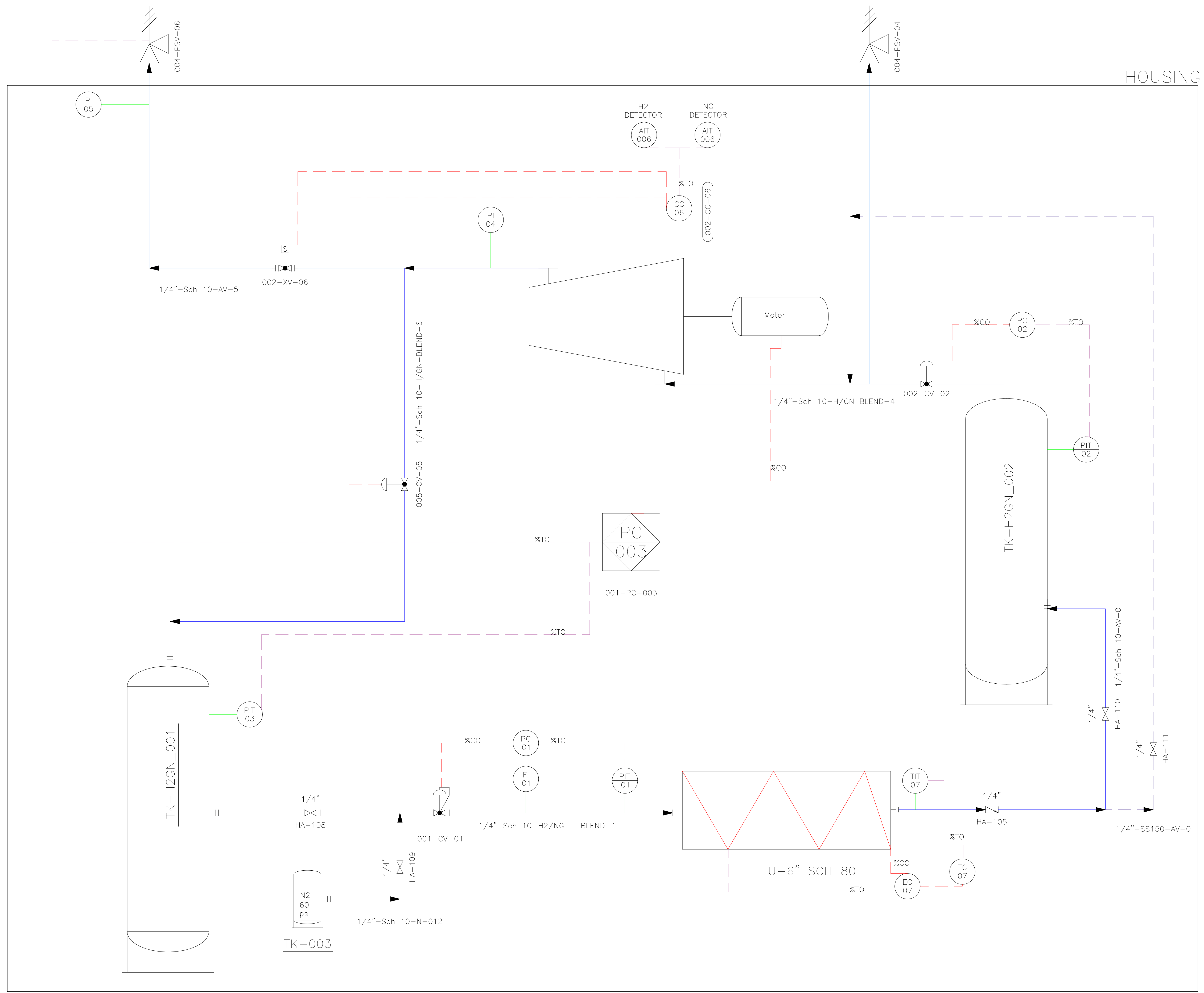
1/4"-Sch 10-AV-0

HA-110

1/4"

HA-111

1/4"-SS150-AV-0



General Notes

No.	Revision/Issue	Date

Drawing Name
P&ID Banco de pruebas para mezclas H2/GN

Project Name and Address
 Instrumentación y Control para un banco de pruebas para tuberías sometidas a altas presiones y diferentes mezclas Gas natural/Hidrógeno

Area Laboratory-La heroica	Stamp
Drawing Number 10	
Author Grupo 10-PF	