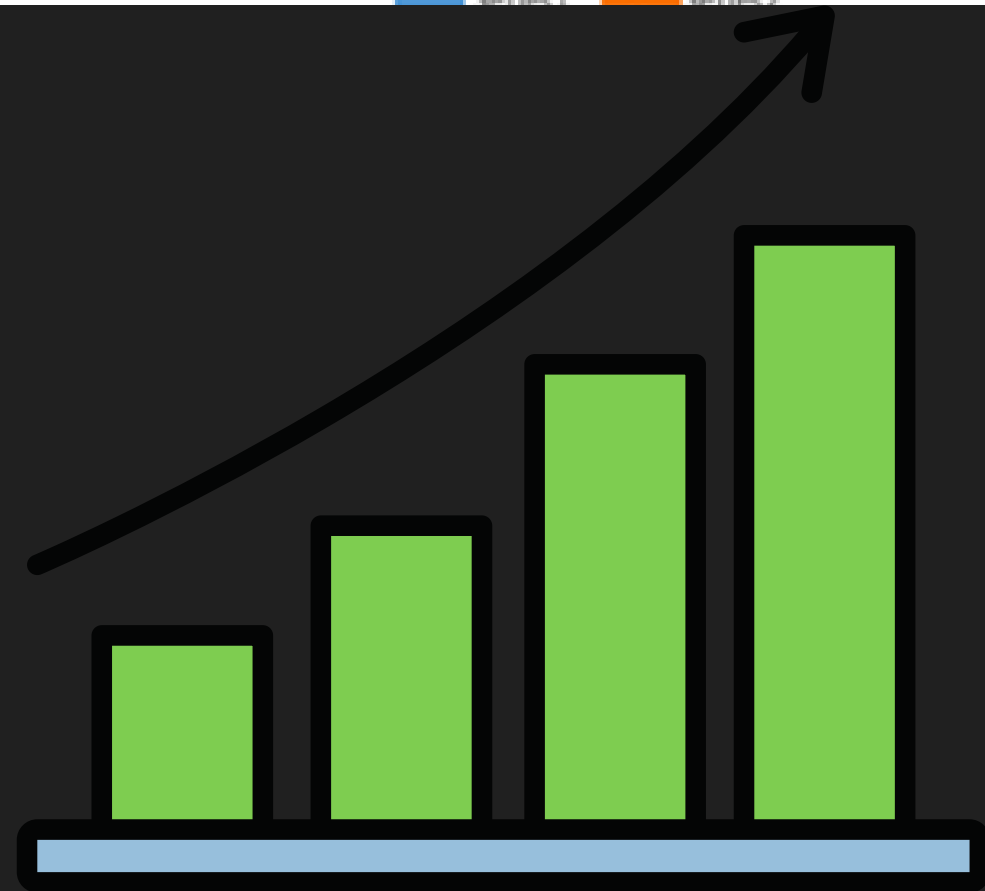
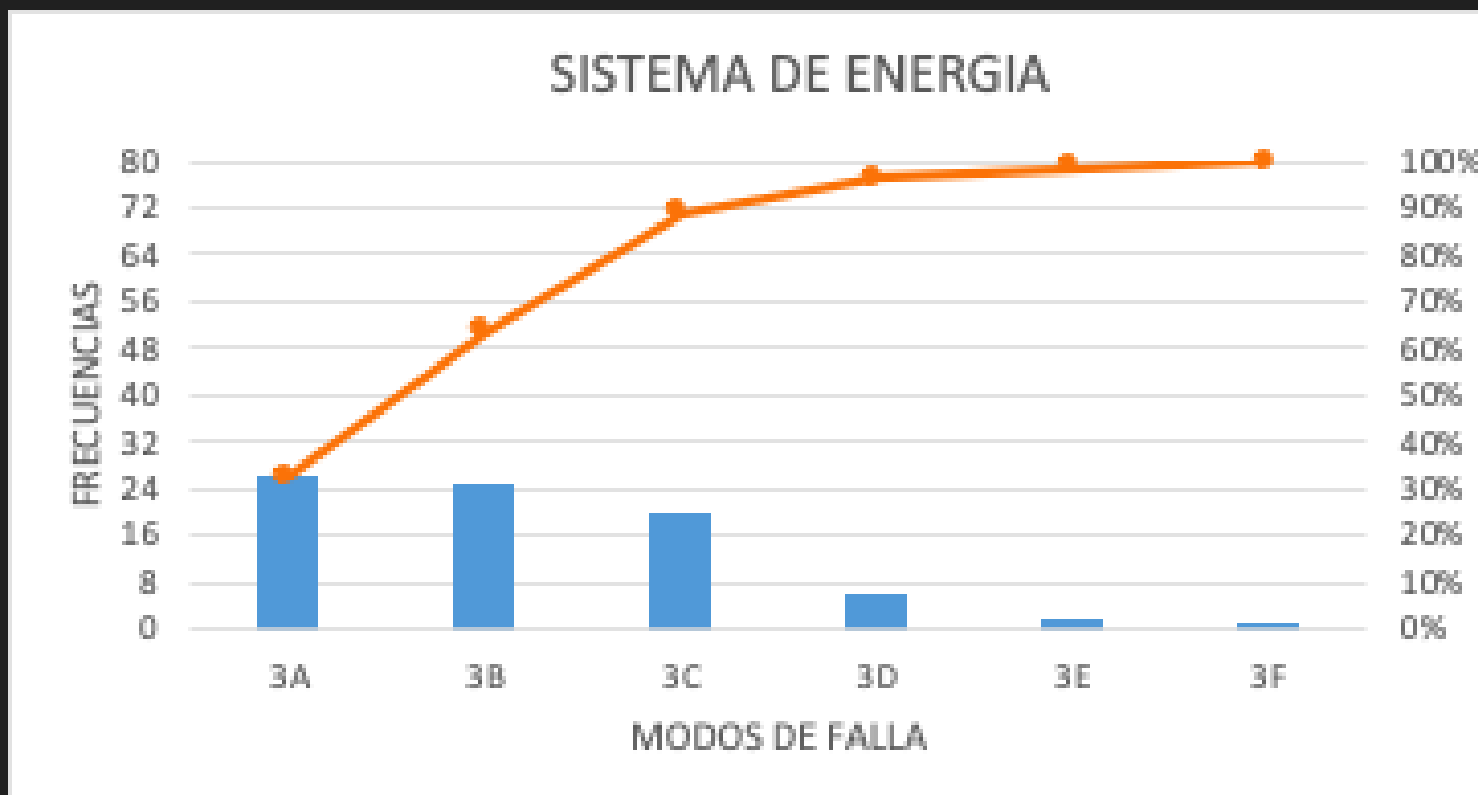
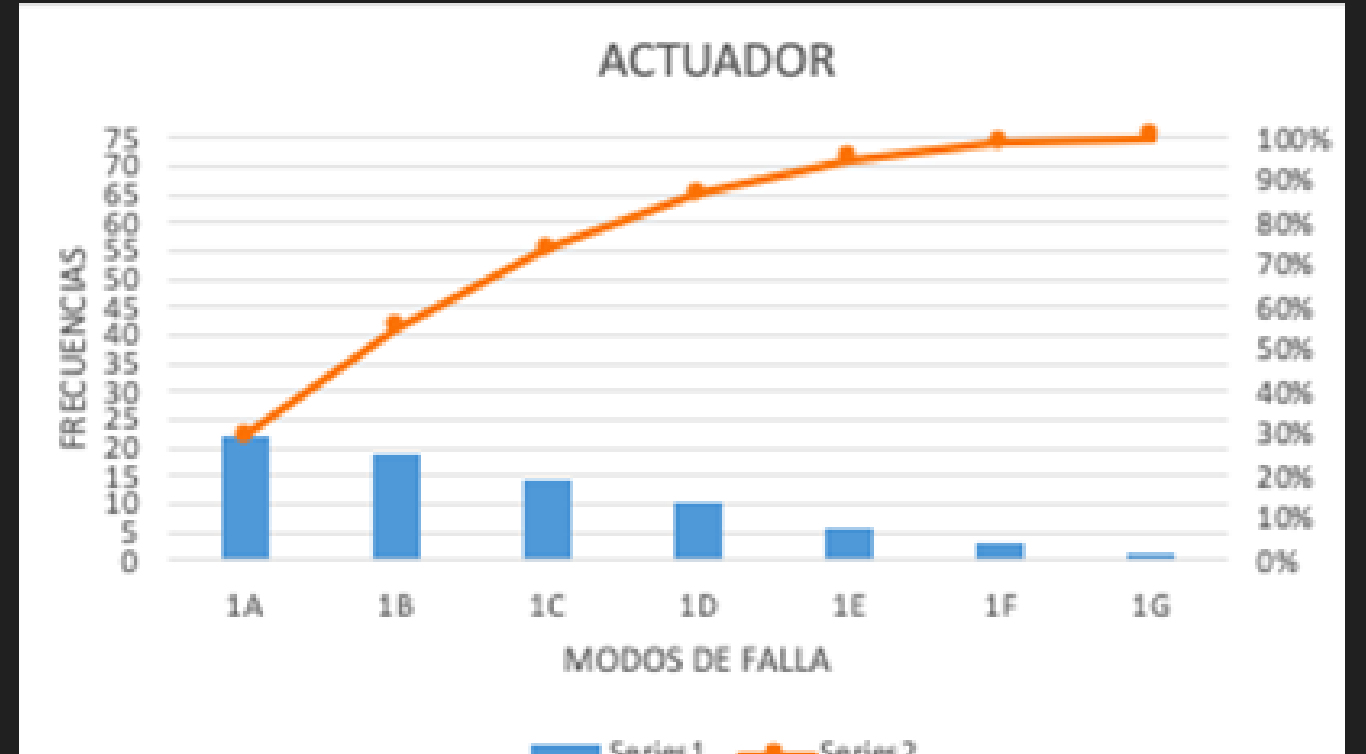
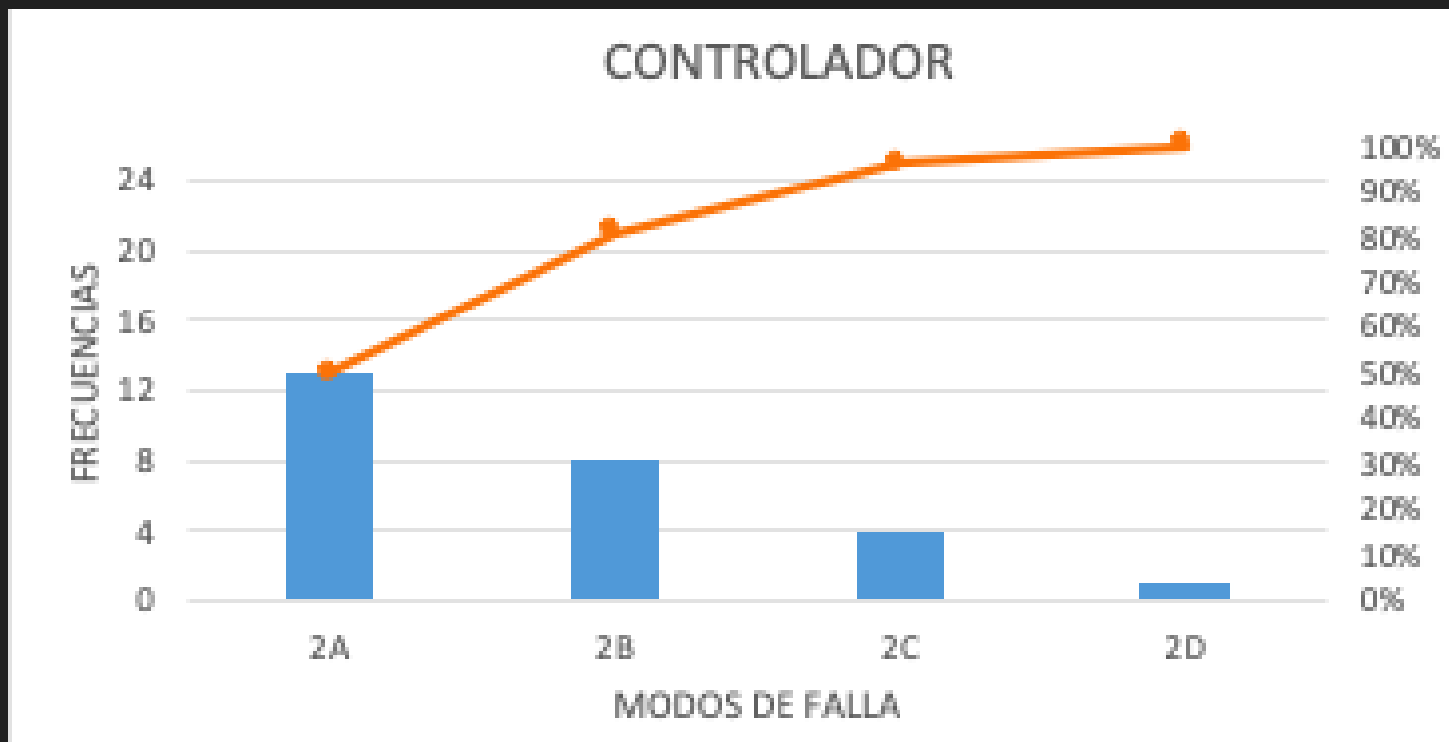
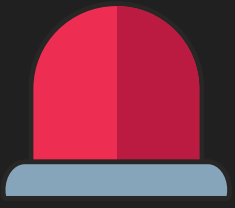
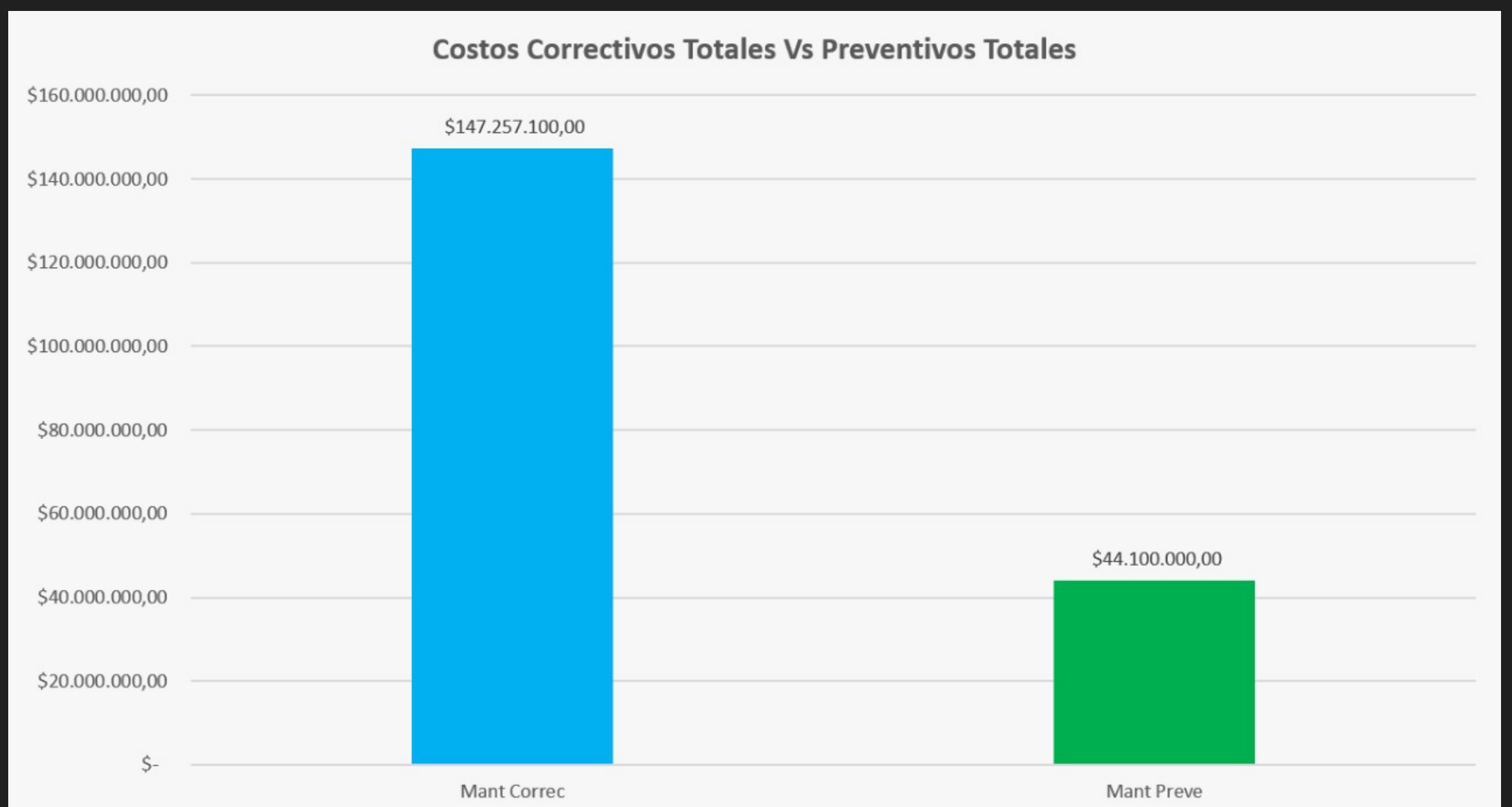
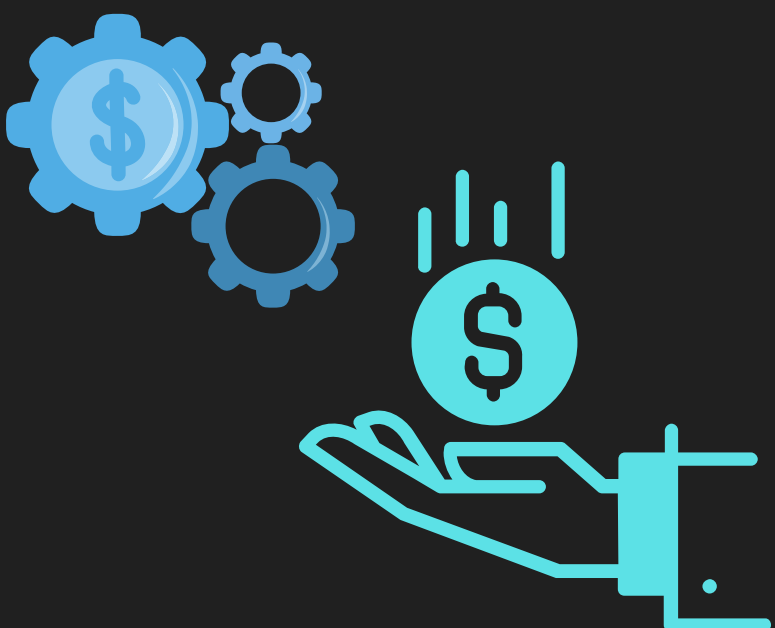


GRAFICOS DE PARETO MODOS DE FALLA



**DISMINUCIÓN
DE COSTOS
TOTALES**



**PORCENTAJE DE AHORRO TOTAL
DEL 70%**

- AHORRO DE COSTOS
- MENOR NÚMERO DE FALLAS
- MENOS FATIGA
- MAYOR VIDA UTIL
- CONTINUIDAD DEL SERVICIO