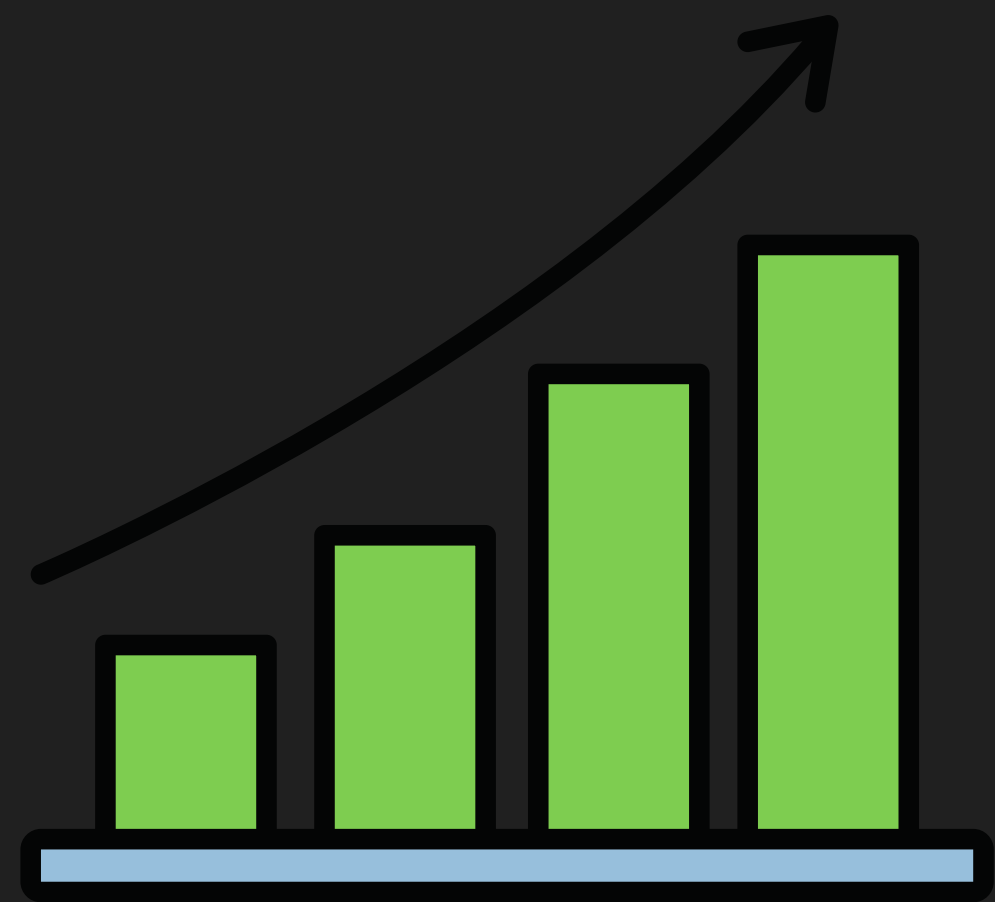
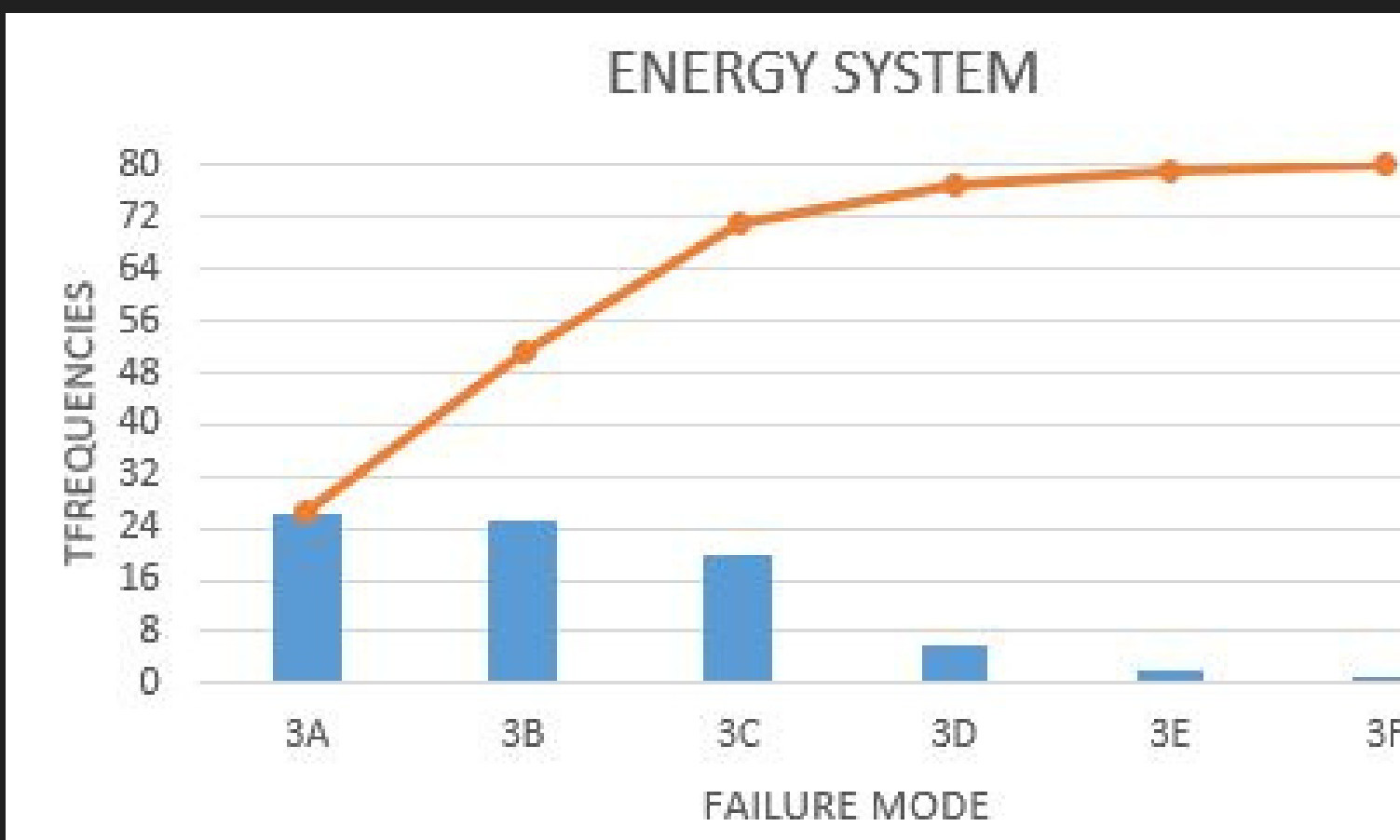
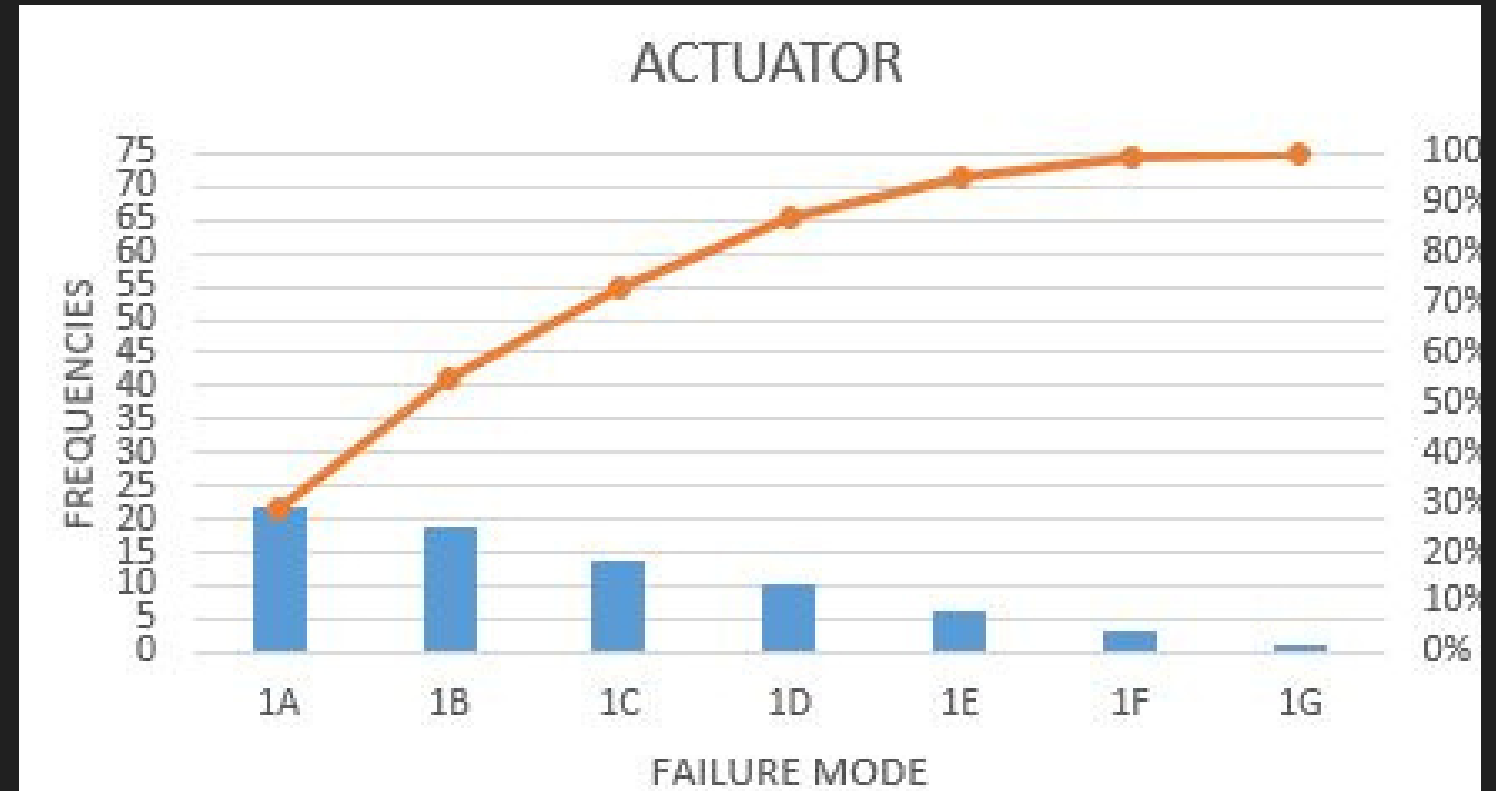
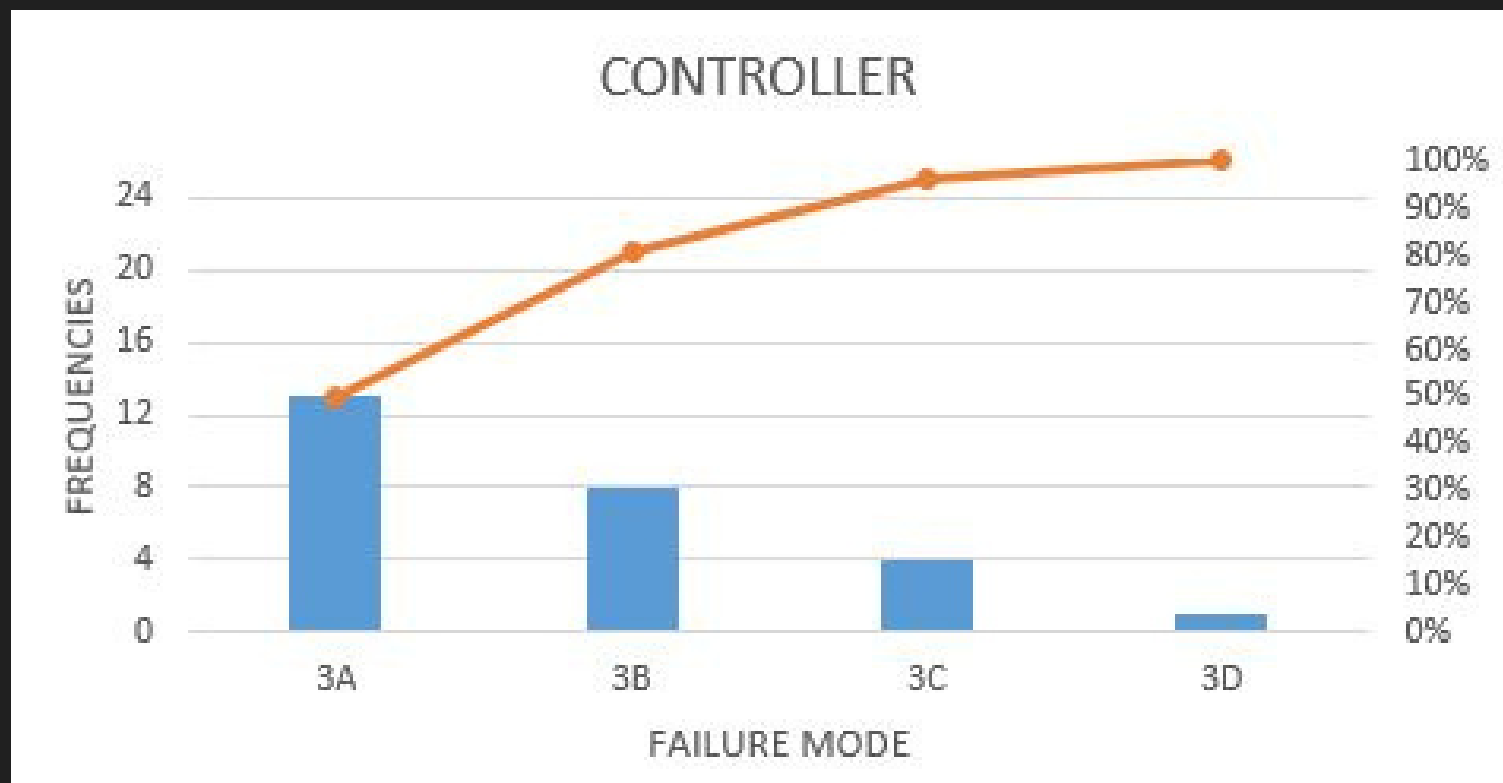
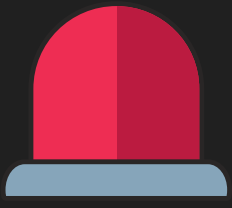
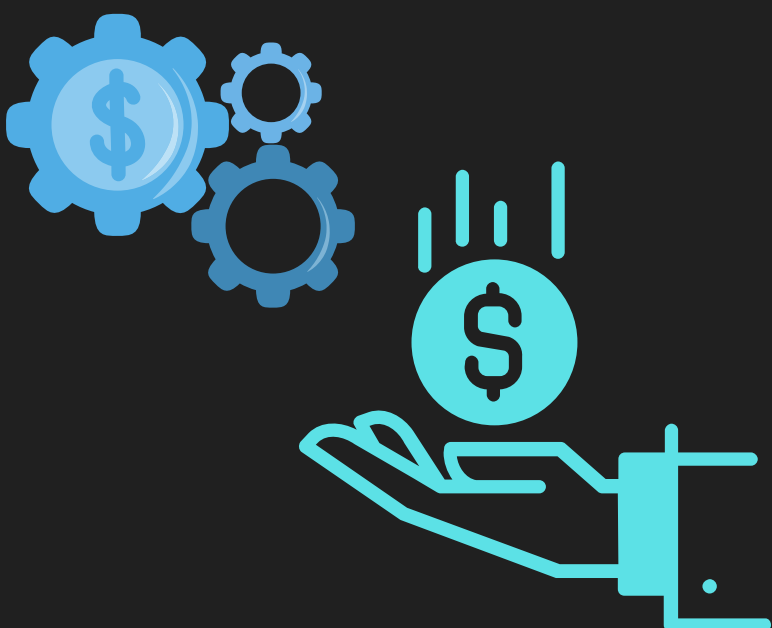
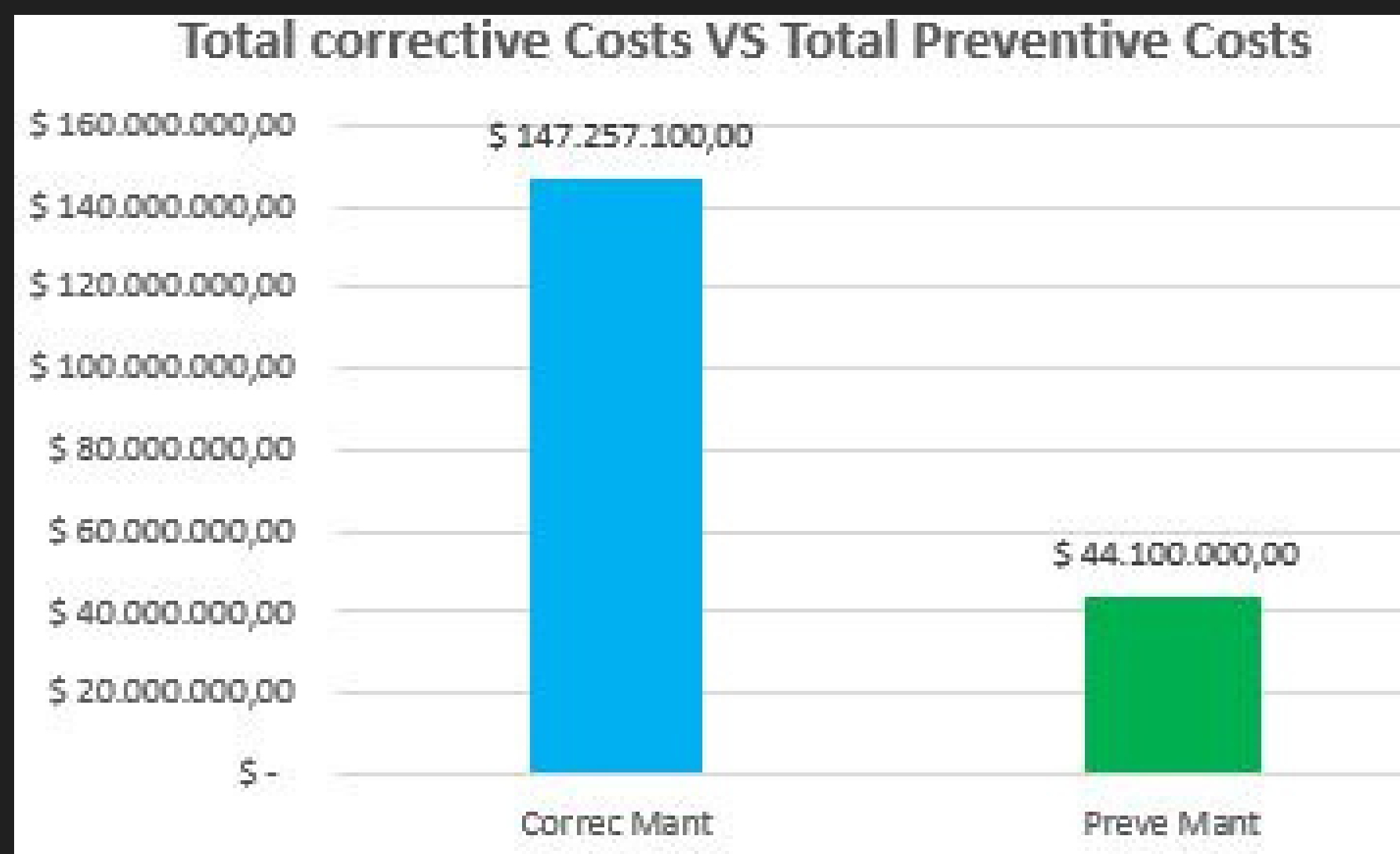


PARETO GRAPHICS FAILURE MODES



TOTALES
DECREASE IN
TOTAL COSTS



PERCENTAGE OF TOTAL SAVINGS OF
70%

- COST SAVING
- LESS NUMBER OF FAULTS
- LESS FATIGUE
- LONGER LIFE
- CONTINUITY OF THE SERVICE